

Authentic Tennessee



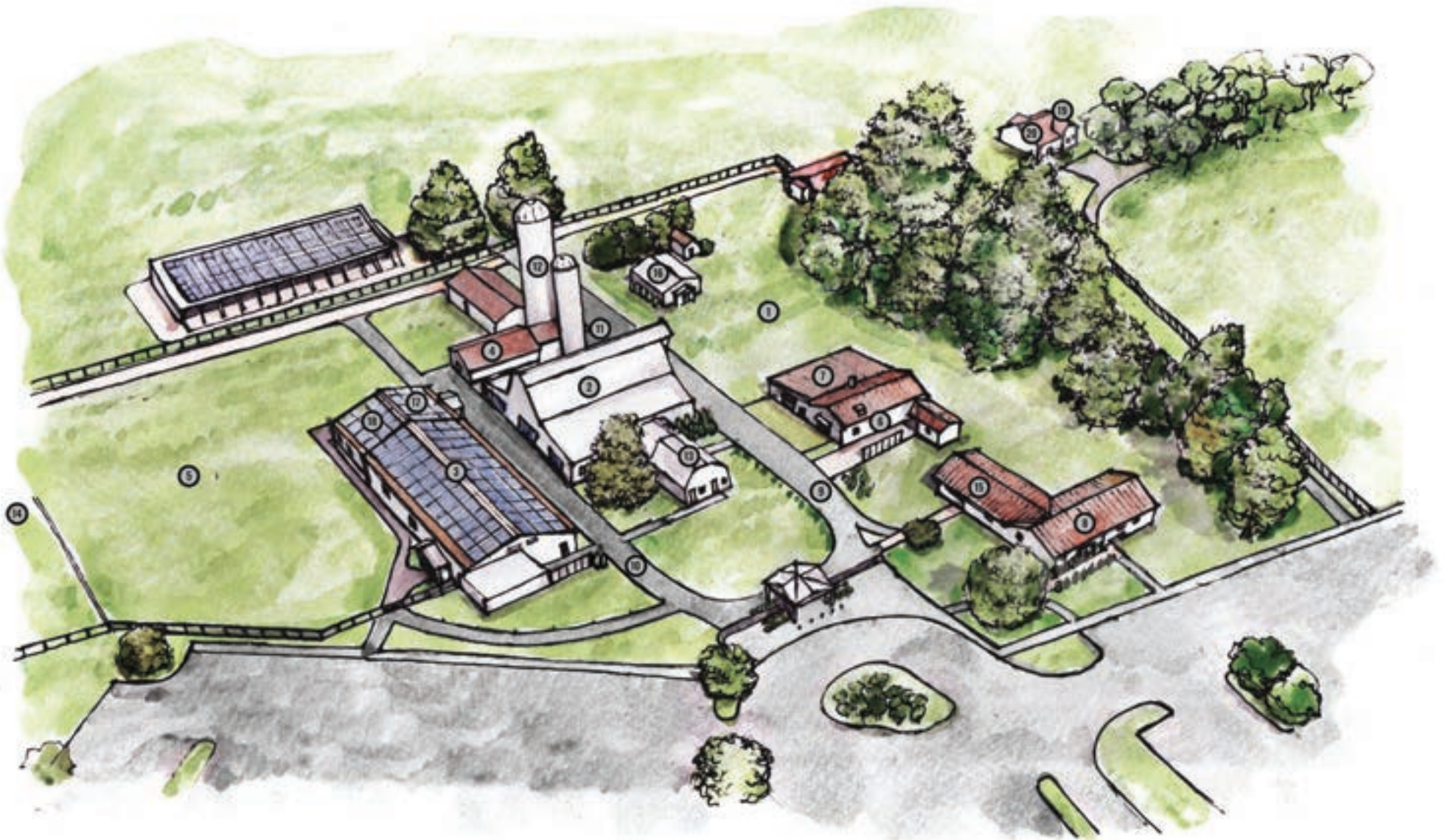
SALES KIT 2022



WELCOME TO *Authentic Tennessee*

Exceptional experiences in an uncommon setting, The Grove at Williamson Family Farm marries the roots of farm life with the best in contemporary amenities for your private event. Whether you bring your ideas or we help you plan your event filled with life lasting memories, The Grove's campus and our World Class event team delivers excellence.

Our 4 and a half acre private events campus and the adjacent 25 acres events space offers three large indoor barn spaces, four private suites, and acres of space for outdoor and tented activities. We are Middle Tennessee's premier farm destination, and we are ready for your wedding, social gathering or corporate event of up to 2,500 guests.



THE GROVE EVENT CAMPUS

- 1. The Grove
- 2. The Main Barn
- 3. The Loafing Barn
- 4. The Silage Shed

- 5. Blackberry Field
- 6. Mitsue's Kitchen
- 7. The Porch
- 8. Event's Office

- 9. Toni Lane
- 10. Bascom Boulevard
- 11. Alice's Alley
- 12. Mark's Well (The Silos)

- 13. The Milking Barn
- 14. The Grainary
- 15. The Poplar Suite
- 16. The Walnut Suite

- 17. The Cedar Suite
- 18. The Oak Suite
- 19. The Cottage
- 20. The Pecan Suite





SAYING "I DO"



LEAF, BRANCH, & ROOT



1. THE GROVE

650 Standing / 450 Seated

Our namesake and the soul of our farm, The Grove is a shaded, open-air two acre space perfect for casual afternoon and evening gatherings. The pecan and black walnut trees that shade the space date to before the civil war. Legend suggests that some of the trees hold civil war era minie ball shot.

The Grove is a flexible space perfect for farm table meals, small performances, and socializing. Adjacent to The Porch, bathrooms and Mitsue's Kitchen, it can host full service events. Tenting is recommended for rain planning and requires a 30 day advance reservation.

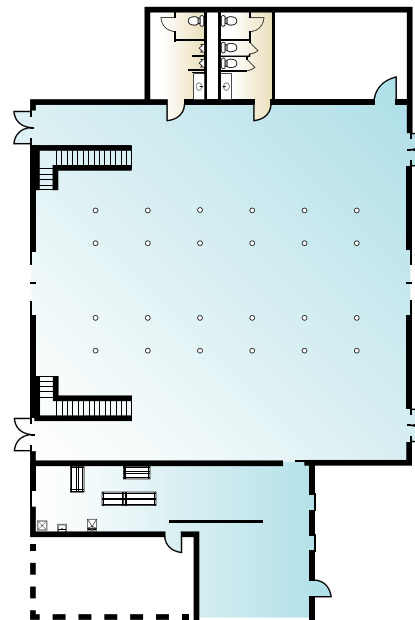




2. THE MAIN BARN

400 STANDING CAPACITY

The Main Barn at 4,800 sq ft. perfectly preserves rustic characteristics with modern amenities to provide the ideal atmosphere for any occasion. The main barn is available for booking year-round, complete with air conditioning for the summer months, and heat for the cooler months months. This barn includes Wi-Fi internet service, cable television, a large rear projection Hi-resolution screen, flat screen TV's and fully functioning sound system with wireless microphones. Additionally, the space boasts a mezzanine level and breathtaking views of the old pecan grove, perfect for amazing and memorable photo opportunities.



FEATURES

- PRE-FUNCTION SPACE
- MEZZANINE LEVEL
- CLIMATE CONTROL
- ATTACHED FLEX CATERING SPACES
- PRIVATE ATTACHED RESTROOMS
- UPDATED FINISHES & FIXTURES
- CEILING FANS
- AV CAPABILITIES
- GUEST PARKING

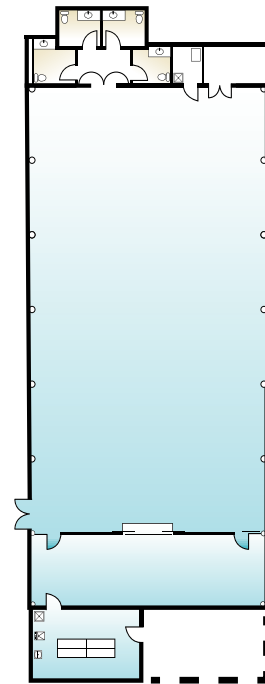
4,616 SQUARE FEET
DIMENSIONS 69' x 66.1'



3. THE LOAFING BARN

200 STANDING CAPACITY

The Loafing Barn acts as a large open canvas that offers the authenticity and accents perfect for a rustic-chic event. New renovations see this space updated this year with heat, large sliding doors that can allow the space to stay open or close on one side, attached dedicated catering facilities, private restrooms, as well as repairs to improve the event experience without sacrificing the original charm. This barn includes Wi-Fi internet service, and a fully functioning sound system with wireless microphones.



FEATURES

- BARN DOORS
- HEATED
- DEDICATED SEPARATE SERVICE ENTRANCE
- PRIVATE ATTACHED RESTROOMS
- EXPANDED ATTACHED CATERING SPACE
- UPDATED FINISHES & FIXTURES
- PRE-FUNCTION SPACE
- ATTACHED FLEX CATERING/STORAGE
- CEILING FANS
- AV CAPABILITIES
- GUEST PARKING

4,500 SQUARE FEET

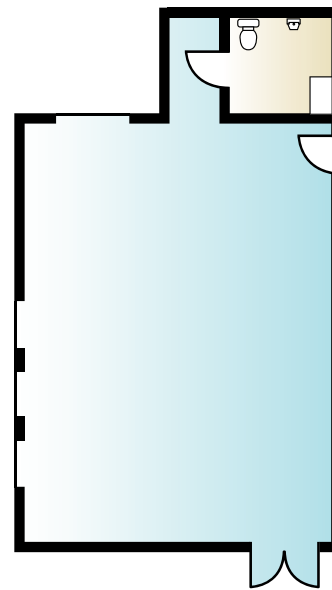
DIMENSIONS 89.7' x 49.7'



4. THE SILAGE SHED

65 STANDING CAPACITY

The Silage Shed hosts intimate gatherings of up to 65 guests. With authentic historic elements such as tractor rigging chandeliers, wood beamed ceilings made from lumber from The Williamson Farm, and cedar lined walls emanating their natural fragrance, this space boasts all the charm events look for when hosting events in a bucolic setting. Nestled on our historic farm, The Silage Shed offers a climate controlled event space, with an attached private restroom, as well as a separate service entry for bar, catering, and other event service needs.



FEATURES

- PRE-FUNCTION SPACE
- CEDAR LINED WALL FINISH
- AUTHENTIC VINTAGE ACCENTS
- CLIMATE CONTROL
- PRIVATE ATTACHED RESTROOM
- DEDICATED SEPARATE SERVICE ENTRANCE
- AV CAPABILITIES
- GUEST PARKING ENTRANCE

1,344 SQUARE FEET
DIMENSIONS 36.6' x 26.1'



FRUIT, FLOWER, & VINE



5. THE BLACKBERRY FIELD

1000 Standing / 650 Seated

The Blackberry Field is your blank slate for most any activity. Two acres of leveled firm grassy pasture that is perfect for tents, food trucks, family activities, fairs and trade shows, and larger performances.

Adjacent to the Loafing Barn, bring your ideas and let's create an exciting experience.



APRON, SPOON, & TABLE

6. MITSUE'S KITCHEN

In Mitsue's Kitchen, Chef hosted occasions are tailored to the individual requests for events such as master cooking classes, team building, demos, and more. A unique concept for events, Mitsue's Kitchen is designed for entertaining with socially - interactive & demo events. Invite guests to enjoy the outdoors on our farm picking fresh items such as blueberries, blackberries, or mushrooms, bringing these back to Mitsue's Kitchen, where a professional Chef helps guests learn more while preparing delicious offerings for a sumptuous repast in the adjacent Porch. Our team helps events elevate the experience by crafting tastings or designing themed events and unique details.

7. THE PORCH

Adjacent to Mitsue's Kitchen, The Porch is an open-air entertaining pavilion with gorgeous views of The Grove. Perfect for cocktail parties or small-medium sized dining events, The Porch allows guests to take in the beauty of the farm in luxury. The perfect space for BBQ's and patio-style dining, with attached catering space, The Porch can be utilized independently or in conjunction with larger outdoor events in The Grove. As a covered event space, The Porch is perfect for events wishing to enjoy the outdoors without worrying about the weather.

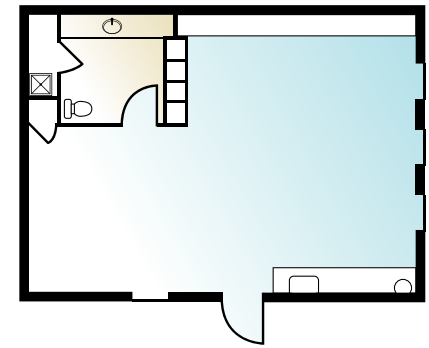




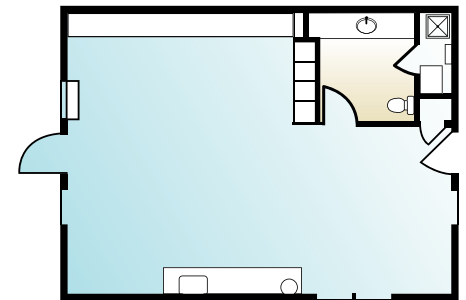
THE SUITE LIFE

Conveniently located in The Grove Event Campus, intimate affairs of 15 guests or less are invited to enjoy a day of casual elegance in one of four private suites. With gorgeous views of our historic farm, each suite is appointed with furnished sitting areas, a wet bar, and a private restroom, as well as additional details for guests to enjoy a day of entertaining and relaxation. Perfect for a Bride or Groom's Suites, Hospitality Suites, Small Meetings, and intimate celebrations, these new additions to The Grove provide events with unique options to entertain and/or add additional space to larger events. Additional elements such as bar service, catering, etc. available.

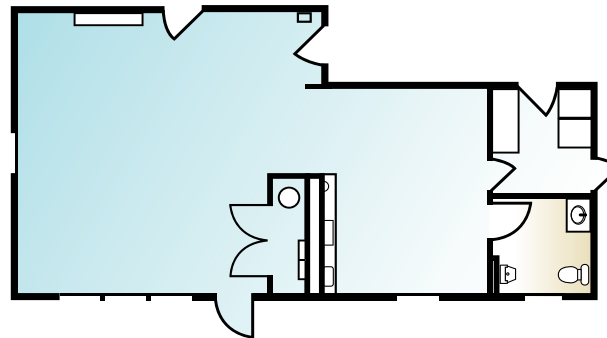
THE OAK SUITE



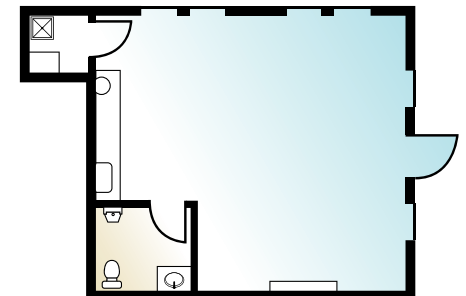
THE WALNUT SUITE



THE POPLAR SUITE



THE CEDAR SUITE



The image shows a modern, rustic-style living room. A large window with dark frames dominates the center, looking out onto a bright, overcast day. A person is standing by the window on the left. To the right, a dark wood fireplace has a fire burning inside. A large television is mounted on the wall to the right of the fireplace. The walls are covered in light-colored horizontal shiplap. The ceiling has dark wood beams. In the foreground, there's a low, light-colored ottoman with some decorative items on it. A lamp is visible on the left side.

IN THE WORKS

The Cottage offers guests a chance to spend the night with us on the farm, enjoying the daily hum of farm life and The Williamson Farm's activities, as well as the calm and beauty of evenings watching the natural wildlife and resplendent beauty of this Tennessee gem.

Luxuriously appointed, The Cottage is perfect for brides who would like to come a day early to relax, or couples for a honeymoon night, or hosts, special guests, or event planners the opportunity to stay on property during or after their event. The Cottage is additionally available for

guests who would just like the experience of staying on a beautiful working farm, while enjoying all the modern amenities and comforts of a luxury B&B. Adjacent to The Cottage, The Pecan Suite allows the opportunity for additional guests to join, while maintaining a separate entrance and bathroom for privacy.

The Cottage boasts a kitchenette separate living room with fireplace, sumptuous queen bedroom, and luxury bathroom with walk-in shower and independent deep-soak tub, as well as a private porch where guests can enjoy watching sunrises and sunsets over the farm.



THE PECAN SUITE

Attached to The Cottage, with a separate entrance and bathroom, The Pecan Suite allows privacy for the option of additional guests.

THE COTTAGE

A luxury, one bath, one-bedroom suite nestled on a 240-acre farm, available for private, overnight stays.





INDIVIDUAL SPACE RENTALS

	STANDING CAPACITY	FRIDAY OR SATURDAY	SUNDAY THRU THURSDAY
THE MAIN BARN + Main Barn Catering Facilities	400 Guests	Hi-Season \$7,000 Lo-Season \$6,000	Hi-Season \$5,500 Lo-Season \$5,000
THE GROVE (Outdoors)	650 Guests	\$4,500	\$4,500
THE LOAFING BARN + Loafing Barn Buffet + Loafing Barn Catering Facilities	200 Guests	\$5,500	\$4,500
THE SILAGE SHED	65 Guests	\$2,500	\$2,500
BLACKBERRY FIELD (Outdoors)	650 Guests	\$2,000	\$2,000
THE POPLAR SUITE	15 Guests	\$1,250	\$1,250
THE WALNUT SUITE	15 Guests	\$1,250	\$1,250
THE CEDAR SUITE	15 Guests	\$1,250	\$1,250
THE OAK SUITE	15 Guests	\$1,250	\$1,250
MITSUE'S KITCHEN + Main Barn Catering Facilities	NA	\$1,000	\$1,000
THE COTTAGE	2	Seasonal Daily Rates Applicable	
THE OAK SUITE	2	Seasonal Daily Rates Applicable	
THE GROVE CAMPUS + Main Barn Catering Facilities	TBD	\$18,000	\$18,000

All of the above is based on availability.
 2% Administration Fee is charged for each contracted event space.
 9.75% Sales Tax is applicable.

OUR PROCESS

HOW IT WORKS



STEP ONE PROPOSAL

Whether you choose one of our packages, or may have specific requests for your event, The Grove's Events Team is delighted to prepare a custom proposal of your event details for your review.



STEP TWO CONTRACT

Once you are ready to secure your event with The Grove, our team will send you the Event Contract and details to book your event. Our team is happy to review details with you, and answer any questions.



STEP THREE DETAILING

Next, your Event Manager will work with you on the Event Order Form, timelines, floor plans, and other event details. For events that have secured The Grove Planning Services, your manager will secure services and details as requested.



STEP FOUR THE EVENT

Our Team and your Event Manager will spend the day preparing for, working, and concluding your event according to the details you have requested, to delight your guests and exceed your expectations.



STEP FIVE CLOSE-OUT

Your final event portfolio will be sent for your records, at the conclusion of your event with The Grove, with our gratitude and request for events to share their valuable feedback with us.

WEDDING PACKAGES



IRIS
PACKAGE



LILY
PACKAGE



MAGNOLIA
PACKAGE



IRIS

\$35,000

Sales Tax and 2% Administrative Fee not Included
Additional services available. Packages based on guest count of 150 people

PLANNING

- Complimentary initial consultation
- Preferred vendors list
- Unlimited phone and email contact
- In person meetings, as needed, including on-site visits
- Assistance developing and customizing your personal wedding design
- Budget review and payment reminders
- Schedule and attend vendor meetings
- Booking and managing selected vendors
- Hotel coordination for out of town guests
- Attending final meeting at the venue and reviewing the BEO
- Creation of comprehensive master timeline for the day to distribute to all vendors
- Confirming all details with your vendors to efficient timing for the day
- Attendance and coordination of your ceremony rehearsal (up to 1.5 hours)
- Two additional event planners to assist
- Receive all day-of deliveries and oversee setup and breakdown
- On-site coordination and supervision of your ceremony and reception
- Setup of personal items at ceremony and reception such as guest book, place cards, favors, cake cutter, and family photos.
- Distribution of any vendor gratuities provided
- Coordination until all scheduled events have taken place during the event
- An emergency kit of items such as safety pins, double-sided tape, Tylenol, floral materials, and more

* Upgrades available

VENUE

- Full use of AV system
- Provision of The Grove tables and chairs for up to 250 people
- Complimentary Wifi
- Use of Main Barn
- Use of one suite
- Include DJ - emcee and music playlist selection
- Decor package provided up to 150 guests: arbor, votives, centerpiece additions

CAKE

- Cakes included are listed on the page following the last wedding package.

FLORAL

- Bridal bouquet and bouquets for up to 5 bridesmaids
- Groom's boutonniere, and up to 5 groomsmen
- Provided arbor, barrel arrangements, and decor **estimated*
- Candles focused, low arrangement, or tall statement pieces **estimated*
- Full service delivery and setup

PHOTOGRAPHY

- Eight hours of photography
- Two photographers
- Engagement session on site
- 10x10 heirloom newlywed album
- USB and print release
- Online gallery
- Custom videography package

CATERING

- One salad
- One entree
- Two sides
- Dessert
- Water, lemonade, and iced tea
- Three staff



LILY

\$40,000

Sales Tax and 2% Administrative Fee not Included
Additional services available. Packages based on guest count of 150 people

PLANNING

- Complimentary initial consultation
- Preferred vendors list
- Unlimited phone and email contact
- In person meetings, as needed, including on-site visits
- Assistance developing and customizing your personal wedding design
- Budget review and payment reminders
- Schedule and attend vendor meetings
- Booking and managing selected vendors
- Hotel coordination for out of town guests
- Attending final meeting at the venue and reviewing the BEO
- Creation of comprehensive master timeline for the day to distribute to all vendors
- Confirming all details with your vendors to efficient timing for the day
- Attendance and coordination of your ceremony rehearsal (up to 1.5 hours)
- Two additional event planners to assist
- Receive all day-of deliveries and oversee setup and breakdown
- On-site coordination and supervision of your ceremony and reception
- Setup of personal items at ceremony and reception such as guest book, place cards, favors, cake cutter, and family photos
- Distribution of any vendor gratuities provided
- Coordination until all scheduled events have taken place during the event
- An emergency kit of items such as safety pins, double-sided tape, Tylenol, floral materials, and more

VENUE

- Full use of built in AV system
- Provision of The Grove tables and chairs for up to 250 people
- Complimentary Wifi
- Use of The Main Barn and The Porch
- Use of two suites
- Include DJ - emcee and music playlist selection
- Decor Package provided up to 150 guests: arbor, votives, centerpiece additions

CAKE

- Cakes included are listed on the page following the last wedding package.

FLORAL

- Bridal bouquet and bouquets for up to 7 bridesmaids
- Groom's boutonniere, and up to 7 groomsmen
- Provided arbor, barrel arrangements, and decor **estimated*
- Candles focused, low arrangement, or tall statement pieces **estimated*
- Cake flowers
- Bud vases for cocktail tables
- Full service delivery and setup

PHOTOGRAPHY

- Eight hours of photography
- Two photographers
- Engagement session on site
- 10x10 heirloom newlywed album
- USB and print release
- Online gallery
- Custom videography package

CATERING

- One salad
- Rolls with butter
- Two entrees
- Two sides
- Dessert
- Water, lemonade, and iced tea
- Three staff

* Upgrades available



MAGNOLIA

\$45,000

Sales Tax and 2% Administrative Fee not Included
Additional services available. Packages based on guest count of 150 people

PLANNING

- Complimentary initial consultation
- Preferred vendors list
- Unlimited phone and email contact
- In person meetings, as needed, including on-site visits
- Assistance developing and customizing your personal wedding design
- Budget review and payment reminders
- Schedule and attend vendor meetings
- Booking and managing selected vendors
- Hotel coordination for out of town guests
- Attending final meeting at the venue and reviewing the BEO
- Creation of comprehensive master timeline for the day to distribute to all vendors
- Confirming all details with your vendors to efficient timing for the day
- Attendance and coordination of your ceremony rehearsal (up to 1.5 hours)
- Two additional event planners to assist
- Receive all day-of deliveries and oversee setup and breakdown
- On-site coordination and supervision of your ceremony and reception
- Setup of personal items at ceremony and reception such as guest book, place cards, favors, cake cutter, and family photos
- Distribution of any vendor gratuities provided
- Coordination until all scheduled events have taken place during the event
- An emergency kit of items such as safety pins, double-sided tape, Tylenol, floral materials, and more.

VENUE

- Full use of AV system
- Provision of The Grove tables and chairs for up to 250 people
- Complimentary Wifi
- Use of The Main Barn, Loafing Barn, Blackberry Field, Grove, and Porch
- Use of two suite
- Include DJ - emcee and music playlist selection
- Decor package provided up to 150 guests: arbor, votives, centerpiece additions

CAKE

- Cakes included are listed on the next page

FLORAL

- Bridal bouquet and bouquets for up to 7 bridesmaids
- Groom's boutonniere, and up to 7 groomsmen
- Provided arbor, barrel arrangements, and decor **estimated*
- Candles focused, low arrangement, or tall statement pieces **estimated*
- Cake flowers
- Bud vases for cocktail tables
- Full service delivery and setup

PHOTOGRAPHY

- Two photographers
- Engagement and bridal session on site
- USB + print release
- 12x12 heirloom newlywed album
- 8x8 Heirloom family albums
- 16x20 canvas portrait
- \$400 print credit
- Social booth
- Hand-edit retouching
- Online gallery
- Custom videography package

CATERING

- One salad
- Rolls with butter, honey, and jam
- Two entrees
- Three sides
- Two dessert
- Water, lemonade, and iced tea
- Three staff

* Upgrades available

CAKES

Bronze

3 tier, 100 serving cake, with choice of buttercream icing style (smooth, textured, or "naked") and fresh flowers from florist arranged on cake. Includes one flavor of cake from La Creme Cakes menu.

Silver

4 tier, 100 serving cake, with choice of buttercream icing style (smooth, textured, or "naked") and fresh flowers from florist arranged on cake. Includes one flavor of cake from La Creme Cakes menu.

Gold

4 tier, 100 serving cake, with fondant icing and any custom design of your choice. Includes one flavor of cake from La Creme Cakes menu.



See full cake menu at lacreme cakes.net/menu

Upgrades Available



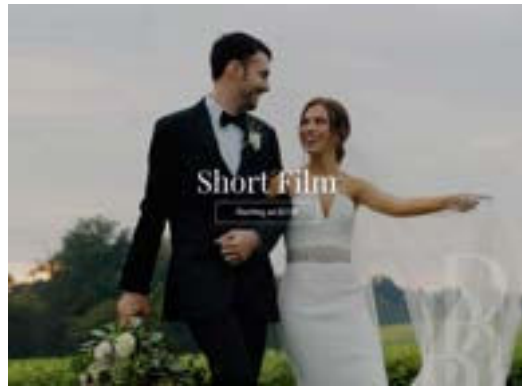
VIDEOGRAPHY

We are Artists, musicians, travelers and story-tellers coming together to document real stories in an authentically beautiful way. Pushing the boundaries of what a wedding film can be with stunning visuals and impactful story-telling set to a uniquely crafted sound tracks. We invite you to explore our 2022 collection guide, get to know us and view our complete library of wedding films.



Highlight Film Details

6-Hours Of Coverage
1-Filmmaker
3-4 Minute Wedding Film
1-Minute Social Media Teaser
Digital Delivery



Short Film Details

8-Hours Of Coverage
1 Filmmaker
4-6 Minute Wedding Film
1-Minute Social Media Teaser
Full Ceremony Film
Digital Delivery
Drone Coverage



Feature Film Details

10-Hours of Coverage
2 Filmmakers
6-8 Minute Wedding Film
Full Ceremony & Toasts Film
1-Minute Social Media Teaser
Digital Delivery
Drone Coverage





PLANNING SERVICES

With our Event Planning services, we are delighted to help book & coordinate details as much or as little as you prefer. Starting with quotes based on your specific requests, we narrow down the best options from which you to choose. Next, we help you navigate the contract process with ease. Then we go to work creating floor plans, timelines, and event order forms as well as working with your vendors to ensure all details are secured for flawless execution of services for your event.



SET-UP & TEARDOWN

The Grove is delighted to allow events to make their own arrangements to set-up and teardown events, but for those events who would prefer, The Grove offers a Set-up/Teardown Package to move heavy tables and chairs into place, lay linens, oversee vendors as they load-in and arrange, etc. After events end, this package allows includes teardown allowing hosts to breathe easy while we do the heavy lifting and peace of mind in ensuring event items are accounted for and returned to proper vendors.

CLEANING

While The Grove is happy to allow events to make their own cleaning arrangements to take place directly after the closure of the event as outlined in our policy, we are also delighted to make a cleaning service package available for events that prefer.



ADDITIONAL WEDDING CELEBRATION PACKAGES



ENGAGEMENT SHOOT BACHELOR | BACHELORETTE WEDDING SHOWER

With authentic historic features, old-growth groves, rolling meadows -- including our famous sunflower fields -- The Grove at Williamson Farm provides amazing opportunities for classic pastoral photo shoots. Our shoots start with a meeting prior to the shoot date to share the venue and options as well as a photo-op map of our property that points out the best features for which subjects to take advantage. Elevated options available, such as a private suite to get ready in, vendor services like make-up & hair artists, golf-cart transportation, and picnic or catered lunches, etc.

Ladies... whether you envision a relaxing day with your best friends enjoying spa services, a day enjoying picking fresh foods to prepare with a professional chef, or a fun day of games and karaoke, we are happy to help you create your perfect version.

Gents... sports and beer? A poker game and cigars? Campfire and cornhole? Our team can create a full experience of terrific ideas for your "best men" to help you commemorate.

Combined... Starting off as you plan to continue -- a couple, what about a BBQ with your closest friends, or a tasting dinner featuring all of your favorite dishes and drinks for guests to enjoy while celebrating you both. We are delighted to help you find the ideal way to celebrate.

Whether you envision an elegant affair or a casual celebration, let us help you find the perfect fit for your shower. At The Grove, wedding showers are invited to join us on our idyllic farm, in one of our beautifully appointed new suites. Ready to assist you with themes such as a tea party, country BBQ, boho-chic, etc., our events team is happy to help coordinate details with décor, catering, games, entertainment, photography and more to ensure a beautiful day of bliss here at the farm.

AVAILABLE ADDITIONS



FIRESIDE

The smell of woodsmoke, sunsets, star-gazing, and good company our fireside sets are the perfect way to enjoy the outdoors for evening or cold-day events. The Grove is delighted to offer intimate, individual fireside set for eight people each set. Elevated fireside sets and additions available.

HAYRIDES

Tractor-pulled covered wagons allow guests to enjoy a trail through the full 240-acre Williamson Family Farm. In addition to beautiful seasonal view of crops, fields, and groves, guests can enjoy a relaxing ride where they can look for birds and wildlife such as flocks of wild turkeys, deer, armadillos, and more.



GAMES

Casual, fun, and great for all ages, we are happy to offer Corn Hole and Lawn Bowling for hosts to add to events for guests' entertainment and enjoyment. Multiple Sets available. Additional game options may be possible upon request.



Do chairs and tables come with the rental fees and/or packages?

The Grove is delighted to provide use of our standard pews, tables, and chairs complimentary. As we are a multi-venue facility with a finite amount of inventory, counts for requested items must be confirmed in advance with The Grove Sales Team. Some elevated items are available and can be rented directly through The Grove. For special furniture requests, an outside rental vendor may be necessary, with additional costs applicable. Additionally, some of our spaces, like the suites and Mitsue's Kitchen do come fully appointed.

Do you have AV capabilities?

Yes, we have state of the art audio/visual capabilities and high-speed internet. We are happy to share our available options upon request. For any additional requests, we are delighted to help coordinate with our preferred A/V provider.

Can we have a live band or DJ at the Event?

Absolutely. We have great recommendations.

Can we provide our own catering?

Yes, we are delighted to allow events to choose their own caterer. A copy of the caterer's professional business license must be provided prior to the event date. We are also happy to help provide caterer suggestions for events that would like referrals.

Can we provide our own alcohol?

Yes. You cannot sell alcohol without a permit from the city and a licensed caterer/bartender, but you are allowed to have it at your non-ticketed event as long as it is brought and served by a licensed TABC server. You will also need to purchase liquor liability insurance in addition to liability insurance.

Do I need event insurance?

Yes, liability insurance is required for events and we can point you in the right direction.





ABOUT THE JOURNEY

FARM TO TABLE

Our unique vision of catering allows guests to select their own caterers and enhanced menus with fresh, seasonal ingredients from our farm. For events looking to elevate this new catering concept, let our event planning team help you find the right caterer and customize your menu around our fresh, seasonal offerings. Recipes especially tailored to highlight our offerings such as fresh herbs and vegetables for savory dishes, fresh fruit ice creams & sorbets, and unique recipes like seasonal edible flower salads sure to delight and impress your guests.





THE JOURNEY CONTINUES

MOVING FORWARD

The Williamson Family Farm will soon be a Tennessee tourism destination. Beginning in the Summer of 2022, twenty acres of the farm will be transformed into a large event venue that will accommodate many creative activities. Some of the bright spots will be our 1700+ seat amphitheater, glamping spaces and educational programs for families and adults. Our farmer is actively transforming the remainder of the farm into a regenerative organic farm that will supply events with fresh organic produce and vegetables.

Once completed, the farm will be a one-of-a-kind, state of the art small family farm designed to engage and educate those who visit.



PREFERRED VENDORS

Events by Raina - *Event Planner*

Larson Floral Co - *Floral*

Ivory Door Studios - *Photography*

Grand Central Party Rental - *Event Rentals*

Sova and Cater 615 Catering - *Catering*

The Curious Kitchen - *Catering*

La Creme Cakes - *Cake Decorator*

Choices DJs - *DJ*

Red Rock Films - *Videographer*





Authentic Tennessee
THANK YOU

To secure your date please contact:

Cameron Creasy, Events Manager
Events@MyGroveEvent.com
615-995-6682
MyGroveEvent.com